

ANR Monthly Customer Update

JUNE 2022

JUNE 22, 2022

Agenda

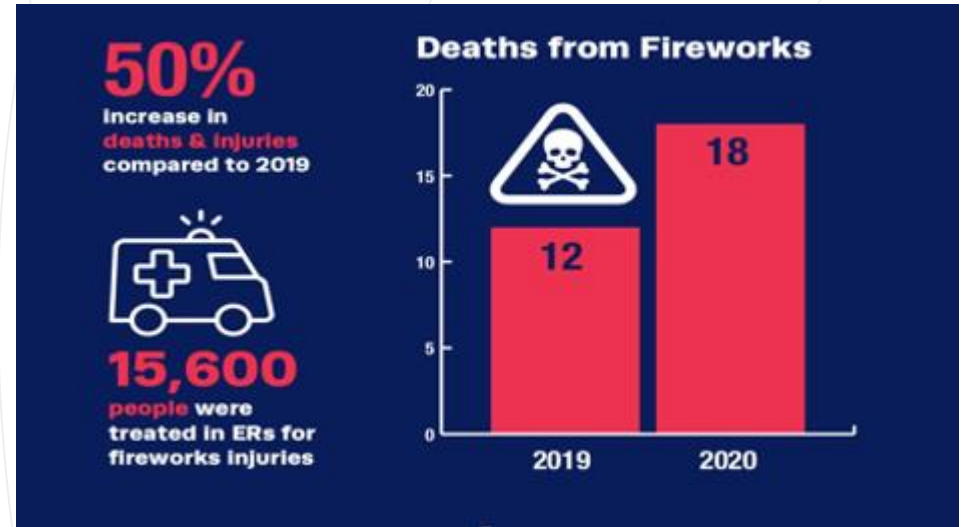


- 1. Safety moment and TC Energy update**
DeAnna Parsell, Noms & Scheduling
- 2. Storage update**
Eric Tawney, Operations Planning
- 3. Operational update**
Kevin Pham, Operations Planning
- 4. Noms & scheduling update**
DeAnna Parsell, Noms & Scheduling

Safety moment

Firework safety

- Never allow children to play with or ignite fireworks.
- Make sure fireworks are legal in your area before buying or using them.
- Keep a bucket of water or a garden hose handy in case of fire or other mishap.
- Light fireworks one at a time, then move back quickly.
- Never try to re-light or pick up fireworks that have not ignited fully.
- Never use fireworks while impaired by alcohol or drugs.
- More fireworks safety tips: [cpsc.gov/fireworks](https://www.cpsc.gov/fireworks)





“The challenge we face globally is to achieve a transition to cleaner energy while meeting the world’s ongoing demand and prioritizing a strong commitment to all ESG pillars. Because of our dominant incumbent position, energy transition is a significant catalyst for our next wave of growth. We have an immense opportunity to leverage our competitive strengths and be a leader in finding solutions.

“We are also further embedding ESG into our strategy and decision making. We are finding meaningful ways to work with stakeholders and communities, attract top talent and empower our people – all while continuing to deliver sustainable shareholder returns and long-term value.”

François Poirier

TC Energy President and CEO

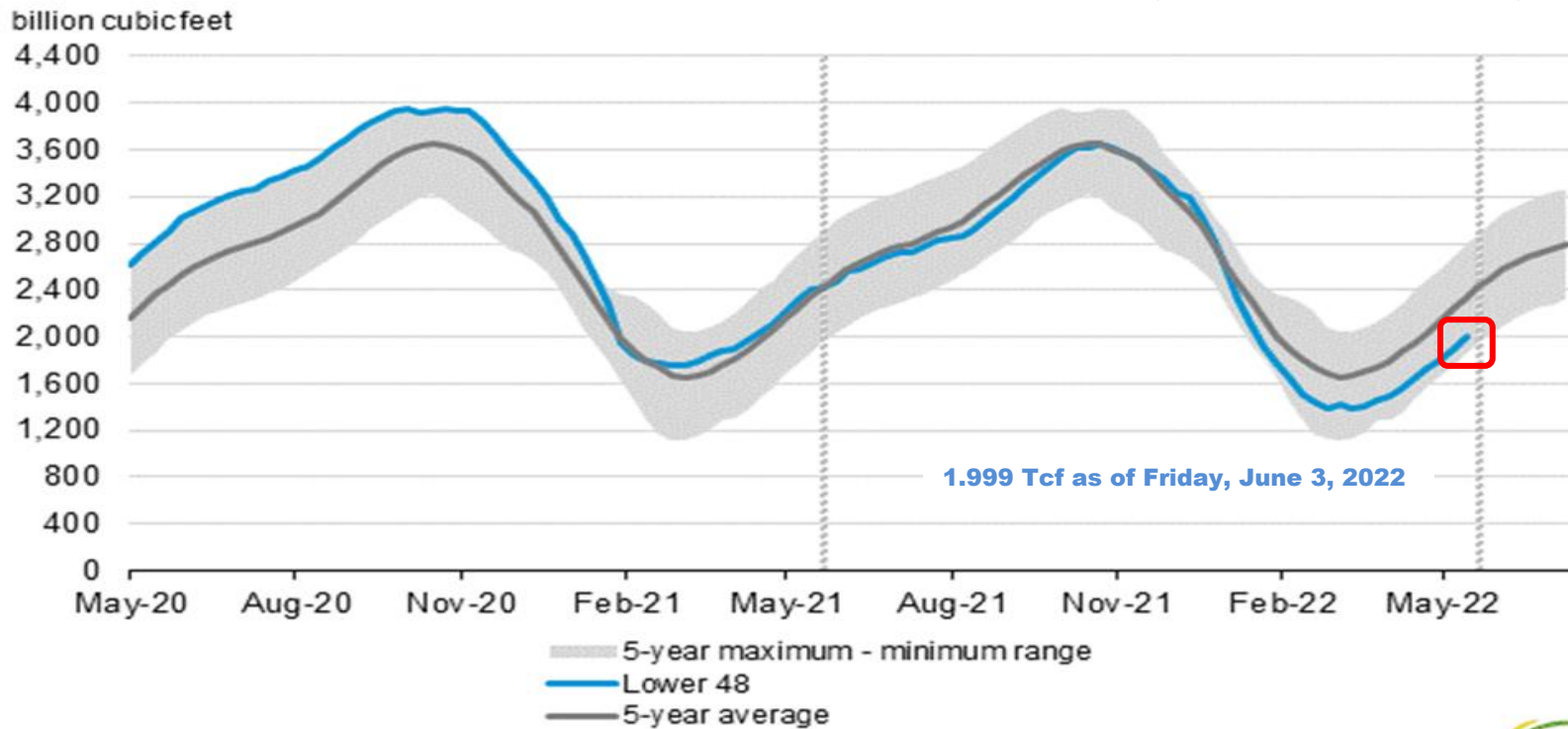
at TC Energy’s inaugural ESG Forum

Storage update

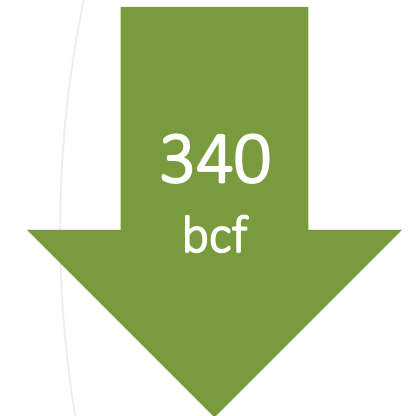
Eric Tawney – Operations Planning

EIA storage position: The big picture

Working gas in underground storage compared with the five-year maximum and minimum

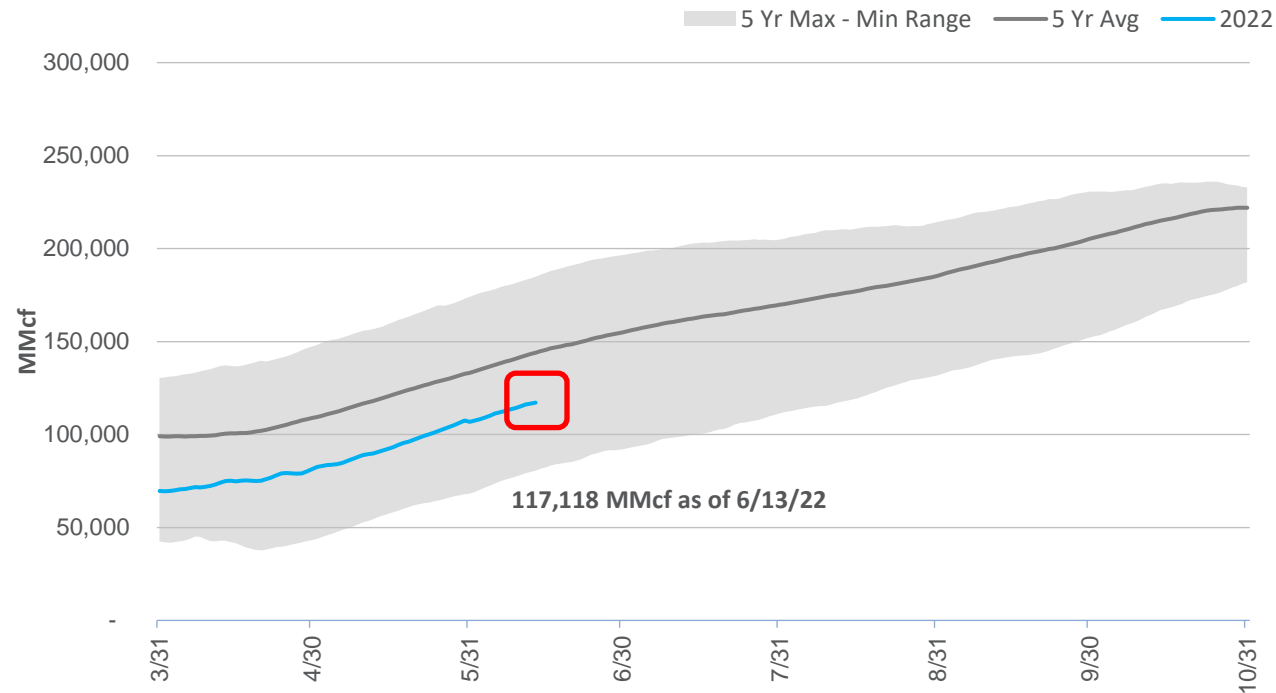


Source: U.S. Energy Information Administration



Storage position

Working gas in underground storage compared with the five-year maximum and minimum



33 bcf

less than June 2021

22 bcf

below the five-year average



Storage operations

- From Monday, May 16 – Monday, June 13, storage activity averaged an injection rate of 904-MMcf/d. Daily activity varied from an injection rate as high as 1.2-Bcf/d to as low as 438-MMcf/d.
- Storage capacity is 47 percent full roughly three months into the injection season.
- ANR has met all firm customer demand for storage activity.
- There is currently one posted restriction on storage activity in July. DDS capacity will be restricted at this time.



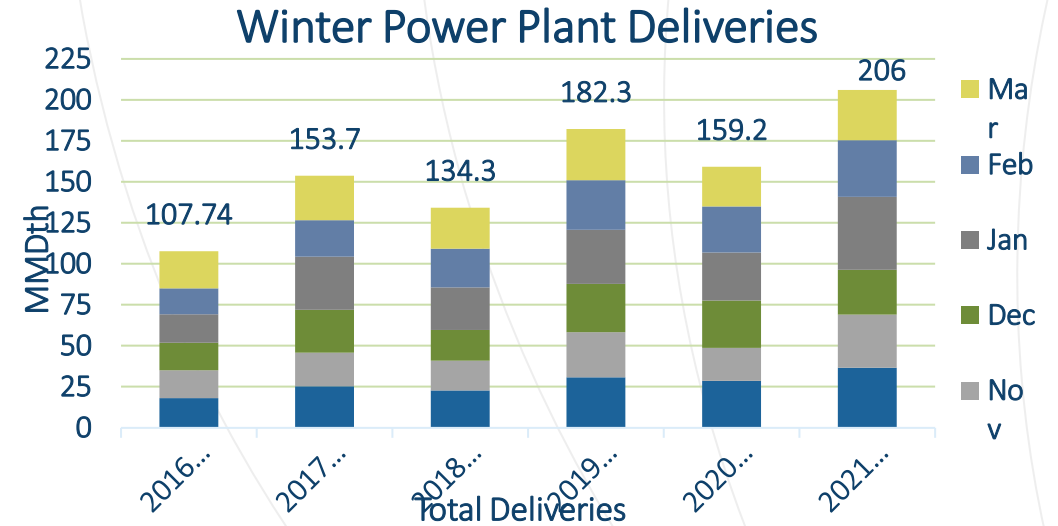
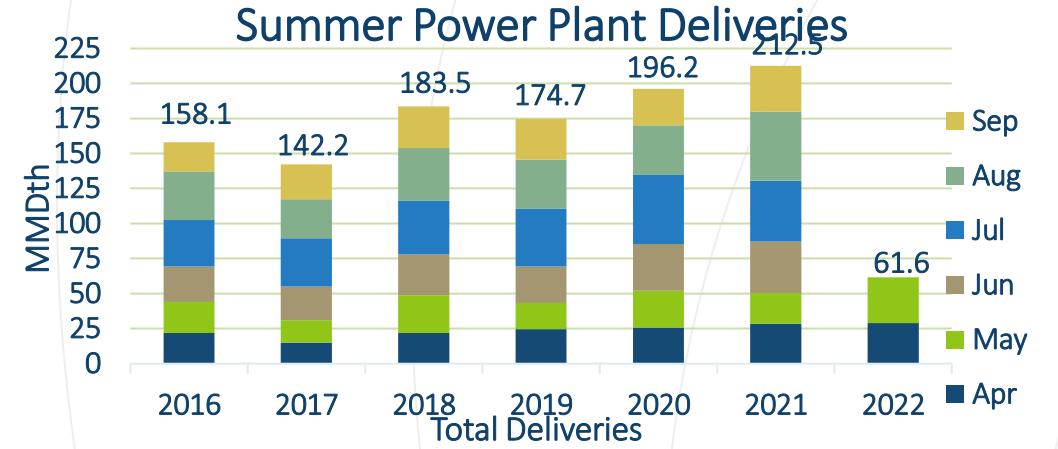
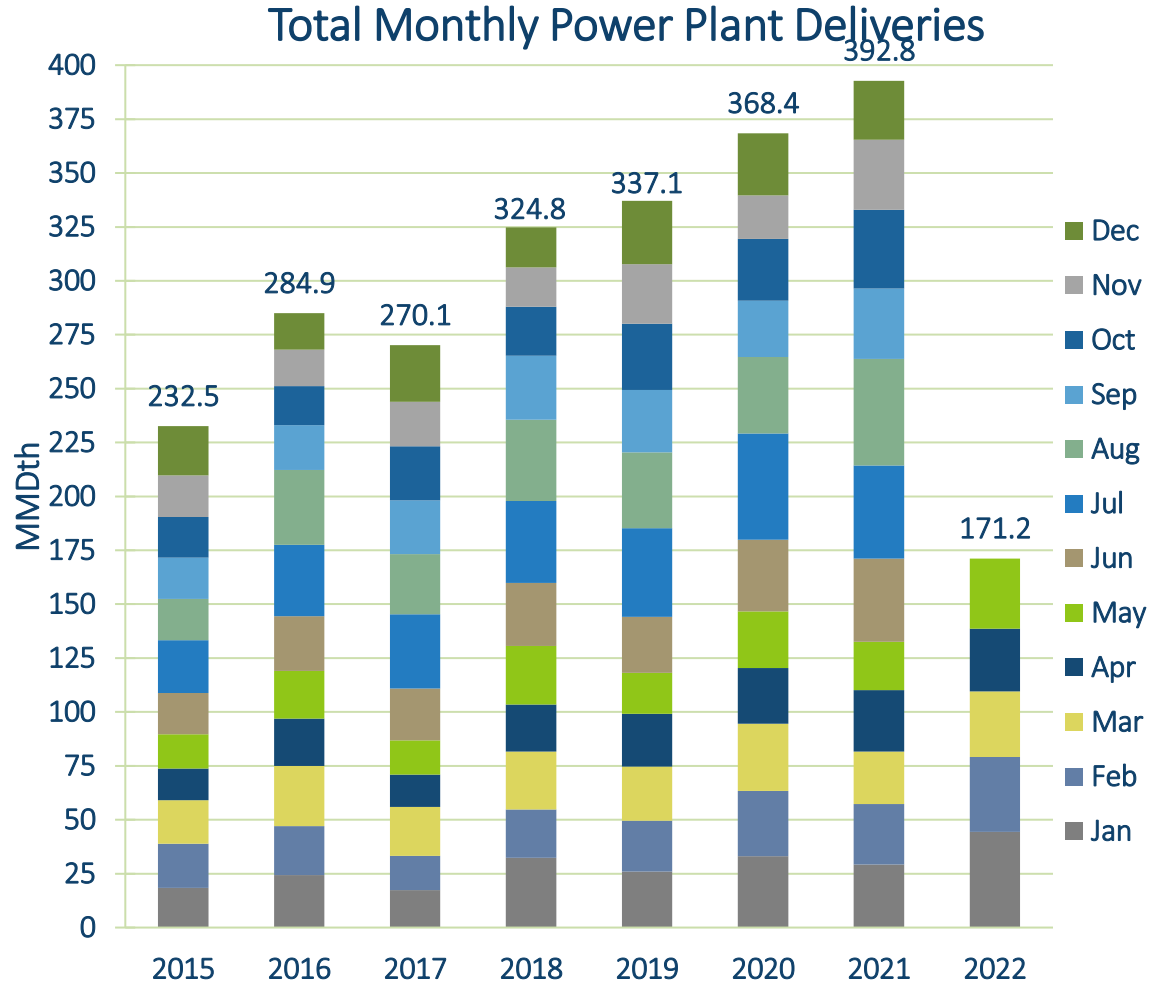
Storage operations

- Planned maintenance activities will occur throughout the summer. The impacts from these activities will be reflected on the EBB under the operationally available capacity.
- As shown, current storage content is lower than normal.
- Lower content combined with sustained high gas prices and power load demand are impacting our storage forecasts, indicating we will not fill by the end of the season.
- These factors will also result in significant variation in injection rates, even resulting in net withdrawals during high power load demand.

Operational update

Kevin Pham – Operations Planning

Monthly deliveries to Power Plants



Capacity impacts (SW Mainline & Area)

		Cap (MMcf/d)		June							July																																										
Dates	Area/Segment/Location	Impact	Avail																																																		
Southwest Area & Mainline				22	23	24	25	26	27	28	29	30	1	2	3	4	5	6	7	8	9	10	11	12	13	14	15	16	17	18	19	20	21	22	23	24	25	26	27	28	29	30	31										
Southwest Mainline Northbound (LOC #226630)																																																					
5/20 - 6/24	Greensburg CS - Automation Upgrade	180	511																																																		
6/25 - 6/30	Greensburg CS Upgrade + Integrity Digs	80	610																																																		
7/1 - 7/4	Integrity Digs	40	650																																																		
7/5 - 7/10	Havensville CS ACU + Integrity Digs	100	590																																																		
7/11 - 7/17	Maitland-Lineville ILI ANR 1-100 + Integrity Digs	140	550																																																		
7/18 - 7/22	Lineville-Birmingham ILI ANR 1-100 + Integrity Digs	140	550																																																		
7/20 - 7/25	Integrity Digs	70	620																																																		
7/26 - 7/30	Integrity Digs	40	650																																																		
SWA - E.G. Hill Northbound (LOC #226643)																																																					
6/23 - 6/24	EG Hill CS - Preventive Maintenance	140	75																																																		
SWA - Custer Northbound (LOC #226644)																																																					
6/23 - 6/24	EG Hill CS - Preventive Maintenance	24	16																																																		
SWA - Mooreland Northbound (LOC #9505448)																																																					
6/23 - 6/24	EG Hill CS - Preventive Maintenance	106	100																																																		
Greensburg/NNG Del (LOC #34887)																																																					
5/20 - 6/24	Greensburg CS - Automation Upgrade	N/A	Shut In																																																		
Greensburg/NNG Rec (LOC #90017)																																																					
5/20 - 6/24	Greensburg CS - Automation Upgrade	N/A	Shut In																																																		



Capacity impacts (SE area)

Dates		Area/Segment/Location		Cap (MMcf/d)		June														July																									
				Impact	Avail																																								
Southeast Area						22	23	24	25	26	27	28	29	30	1	2	3	4	5	6	7	8	9	10	11	12	13	14	15	16	17	18	19	20	21	22	23	24	25	26	27	28	29	30	31
Stingray Int (LOC #135819)																																													
8/20 - 12/31/22	Pipeline - Integrity Issue / Hurricane Laura Damage		N/A	Shut In																																									
Multiple Meters - Cameron Area																																													
10/20 - 12/31/22	Meter Station - Hurricane Laura Damage		N/A	Shut In																																									
Shadyside/TGP Rec (LOC #467239)																																													
1/6 - 7/31	Meter Equipment Issue		N/A	Shut In																																									
Shadyside/TGP Del (LOC #467240)																																													
1/6 - 7/31	Meter Equipment Issue		N/A	Shut In																																									
Patterson/Trunkline Del (LOC #40317)																																													
7/13	Patterson Compressor Station - Safety System Test		N/A	FPO																																									
Patterson to Col Gulf (LOC #43613)																																													
7/13	Patterson Compressor Station - Safety System Test		N/A	FPO																																									
Riverway (To Bridgeline) (LOC #42593)																																													
7/13	Patterson Compressor Station - Safety System Test		N/A	FPO																																									



Capacity impacts (SEML)

		Cap (MMcf/d)		June							July																																
Dates	Area/Segment/Location	Impact	Avail																																								
Southeast Mainline				22	23	24	25	26	27	28	29	30	1	2	3	4	5	6	7	8	9	10	11	12	13	14	15	16	17	18	19	20	21	22	23	24	25	26	27	28	29	30	31
Brownsville Southbound (LOC #1260569)																																											
7/20 - 7/21	Brownsville CS Scrubber Maintenance	207	898																																								
Cottage Grove Southbound (LOC #505614)																																											
7/8	Celestine CS ESD	175	973																																								
7/26	Madsonville CS HP Replacement	200	948																																								
TBD	Cottage Grove CS ESD	200	948																																								
Delhi Southbound (LOC #1379345)																																											
7/6 - 7/7	Sardis CS ESD & System Test/Inspection	130	969																																								
7/26 - 7/27	Delhi CS - Soak Wash	116	983																																								



Outage postings

- Service impacts are estimates. Actual nominations, markets, weather and pipeline conditions determine any level of curtailments.
- Projects may be added, altered, delayed or cancelled. Emergent work cannot be planned and will happen from time to time.
- Notice of such planned work, including additions or changes, will be provided via a posting under the Planned Service Outage (PSO) category in GEMS. Emergent work will be posted under the Critical Notice category as soon as possible.



Nominations & Scheduling update

DeAnna Parsell – Noms & Scheduling

ANRPL Storage Facilities (Loc ID 153808) Available Capacity

Critical Notice # 10821

Effective gas day June 22, 2022, the injection capacity for ANRPL Storage (Loc ID 153808) will be 722,160 dth until further notice.

This capacity is reflective of the current field and unit availability and is subject to change.

If you have any questions about this posting or need assistance, please contact the ANR Nomination & Scheduling team at 1-800-827-5267.

Reminders

- Check ratchet levels regularly to ensure you aren't over MDIQ/MDWQ
- DDS storage contracts should not be negative
- Infield Storage Transfers **must** have the balance available the prior day.
- Available capacity in GEMS is decremented based on flow hours remaining. Info Postings available capacity reflects the full day volume. To determine the actual remaining capacity, it must be manually calculated.
- Capacity on EBB may reflect there is space available at a location where cuts occurred
 - Capacity happens earlier in the cycle (cut order is priority, price, rank)
 - Space can open due to confirmations cuts and balancing cuts later in the cycle

ANR customer assistance

Please contact the ANR Noms & Scheduling team for customer assistance, including:

- Scheduling priorities
- Firm service rights and features
- GEMS new user training
- Virtual and face-to-face meetings



TOLL FREE

1-800-827-5267



GROUP EMAIL

[ANR Noms Scheduling
@tcenergy.com](mailto:ANR_Noms_Scheduling@tcenergy.com)



WEBSITE FOR THE ANRPL
TARIFF

ebb.anrpl.com

Questions



US\$ 0.8	0.2	
US\$ 0.7	0.3	
US\$ 0.6	0.4	
US\$ 0.5	0.5	
US\$ 0.4	0.6	
US\$ 0.3	0.7	
US\$ 0.2	0.8	
US\$ 0.1	0.9	
US\$ 0.0	1.0	
Total Expenditure Equivalent		14.2